

High Speed Direct Drive Centrifugal Upblast Exhaust Fan with speed control (speed control included for single phase only), disconnect switch and 10-1/2" wheel.

Exhaust Motor:

Model CK42BS04M01-60-115, 0.180 HP, 1 Phs, 115 V, 60Hz, 1.9 FLA, ODP (Open Drip Proof)

Exhaust Performance:

Volume: 400 cfm
RPM: 1329
TS: 3653 ft/min
SP: 0.500" w.g.
BHP: 0.1
Discharge Velocity: 284 FPM
Altitude: 893'
Ambient Temp: 70°F

Exhaust Installation Information:

Unit Main Input: 2.4 Amps MCA, 15 Amps MOP, 115 V, 14 AWG Wire Min.
Exhaust Unit Voltage: 1 phs 115 V 60Hz

Construction Features

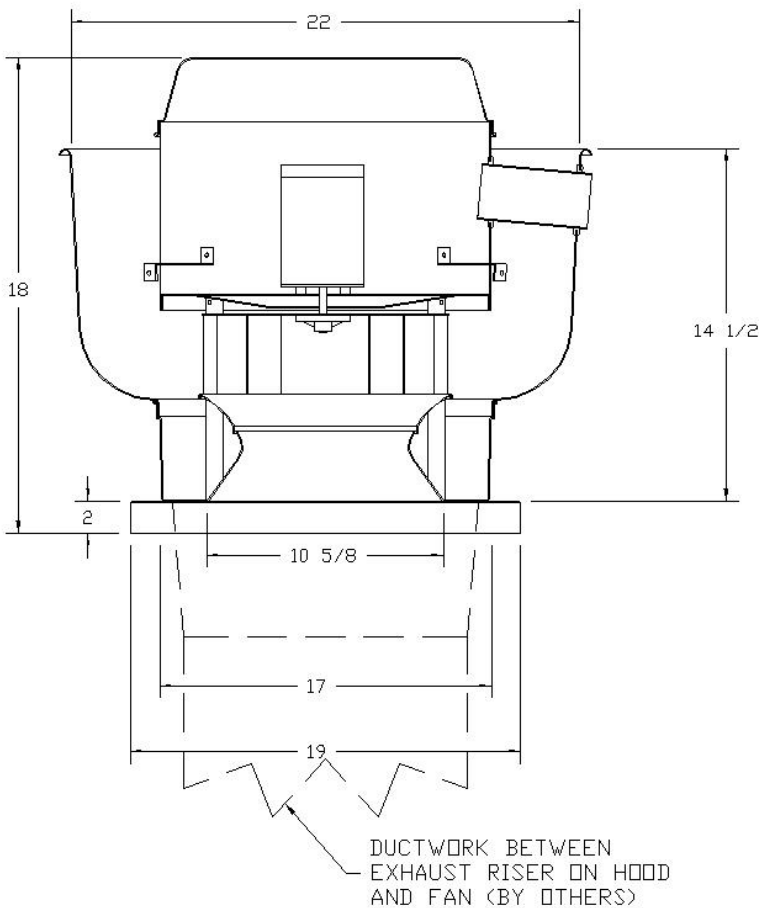
Housing constructed of heavy gauge aluminum • Centrifugal backward inclined, non-overloading wheel • Weatherproof safety disconnect switch • Grease spout welded to housing • Vibration isolators • Continuous duty, thermal protected, permanently lubricated, direct drive motor • Forces fresh air through motor to ensure long motor life • Variable Speed Control on Single Phase Units Only. (VFDs required to adjust speed for 3 phase versions) • Corrosion resistant fasteners • Thermal overload protection • High heat operation (400 °F) • Rated for restaurant and general ventilation applications • Grease classification tested

FEATURES:

- DIRECT DRIVE CONSTRUCTION (NO BELTS/PULLEYS)
- ROOF MOUNTED FANS
- RESTAURANT MODEL
- UL705
- VARIABLE SPEED CONTROL
- INTERNAL WIRING
- WEATHERPROOF DISCONNECT
- THERMAL OVERLOAD PROTECTION (SINGLE PHASE)
- HIGH HEAT OPERATION 300°F (149°C)

NORMAL TEMPERATURE TEST

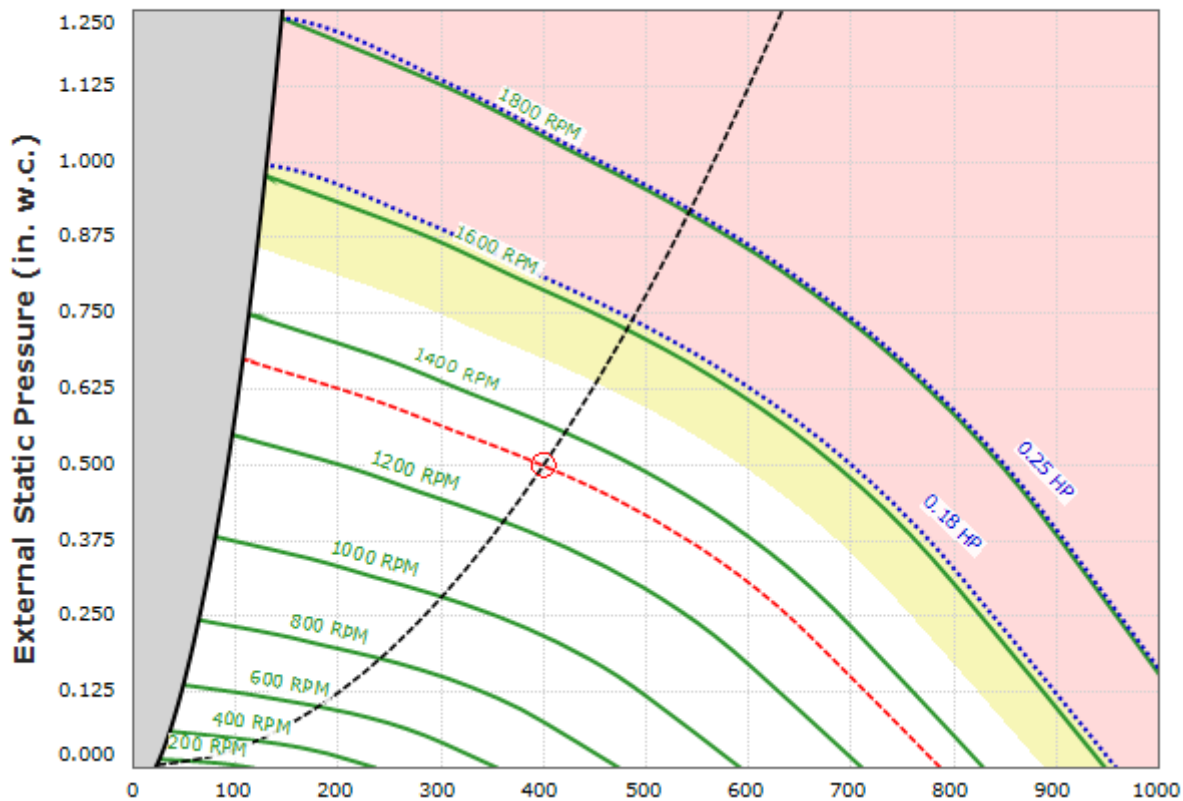
EXHAUST FAN MUST OPERATE CONTINUOUSLY WHILE EXHAUSTING AIR AT 300°F (149°C) UNTIL ALL FAN PARTS HAVE REACHED THERMAL EQUILIBRIUM, AND WITHOUT ANY DETERIORATING EFFECTS TO THE FAN WHICH WOULD CAUSE UNSAFE OPERATION.





400 CFM, 0.5 SP @ 1329 RPM and 0.1 BHP at 893 feet and 70° F

* Note: Curves are adjusted to job specific temperature and altitude.
 Yellow shaded region is above the max recommended RPM.
 Red shaded region is outside the operating range of this fan.



exhaust sound data @ 1329 RPM:

LWA at 5 ft.: 65.5 Sones at 5 ft.: 7 DBA at 5 ft.: 54

Distance	Octave 1	Octave 2	Octave 3	Octave 4	Octave 5	Octave 6	Octave 7	Octave 8
5 ft.	67	69.6	69.5	60.7	58.1	55	51	44